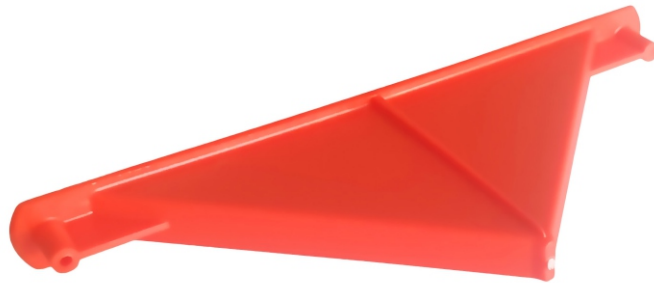
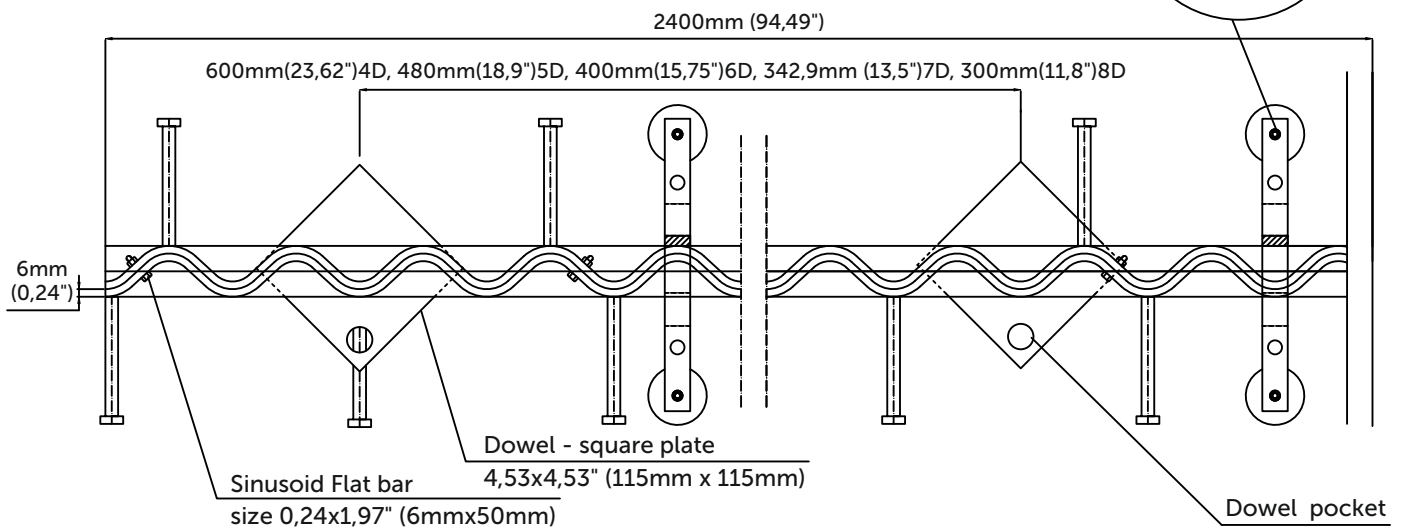
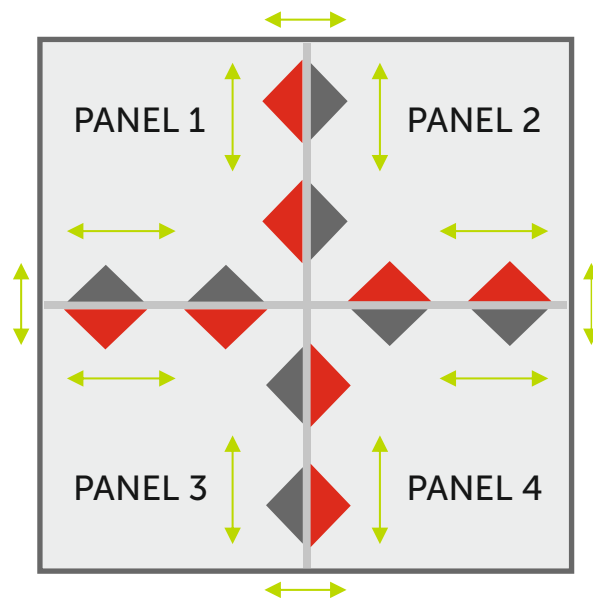


Actual measurements in [mm] only. [in] measurements are approx. indications only.

UNIQUE DESIGN TO SUPPORT BI-DIRECTIONAL MOVEMENT



ABS Copolymer Pockets For Steel Dowels



Actual measurements in [mm] only. [in] measurements are approx. indications only.

INDUSTRY-LEADING LOAD TRANSFER PERFORMANCE BY DESIGN

06NS50 (L=2,4m)

8mm

Bearing capacity depending on the spacing of dowels, and dilatation opening [kN/lm]
diamond dowels 115x115, 8mm steel S355, concrete C25/30

dowel spacing \ opening	0	5	10	15	20	25
4 / 23,62" (600)	224	147	100	71	52	40
5 / 18,9" (480)	280	184	125	89	66	50
6 / 15,75" (400)	336	221	150	107	79	60
7 / 13,5" (343)	392	257	175	124	92	70
8 / 11,81" (300)	448	294	200	142	105	80
9 / 10,5" (267)	503	331	225	160	118	90

acc to TR34.4 - 2013

06NS50 (L=2,4m)

10mm

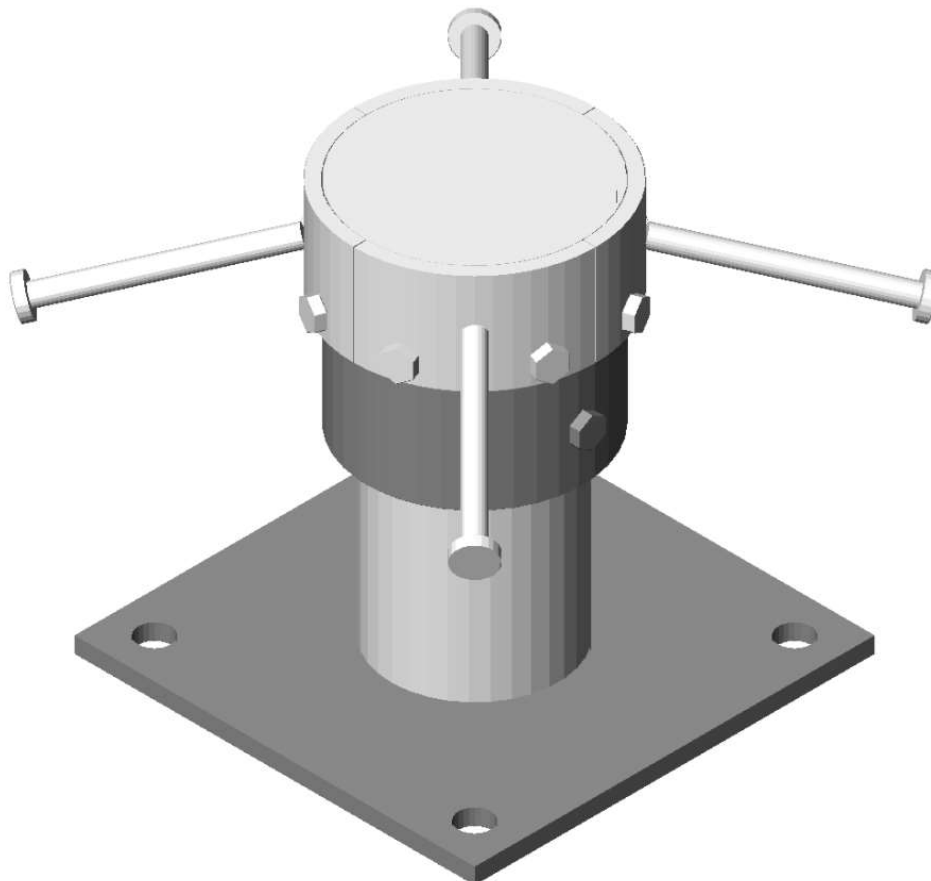
Bearing capacity depending on the spacing of dowels, and dilatation opening [kN/lm]
diamond dowels 115x115, 10mm steel S355, concrete C25/30

dowel spacing \ opening	0	5	10	15	20	25
4 / 23,62" (600)	280	197	141	104	78	60
5 / 18,9" (480)	350	246	176	130	98	75
6 / 15,75" (400)	420	296	212	156	117	90
7 / 13,5" (343)	490	345	247	182	137	105
8 / 11,81" (300)	559	394	282	207	156	120
9 / 10,5" (267)	629	443	318	233	176	135

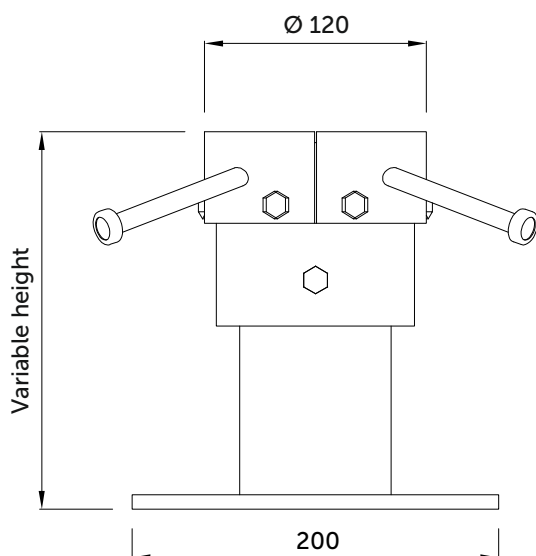
acc to TR34.4 - 2013

Actual measurements in [mm] only. [in] measurements are approx. indications only.

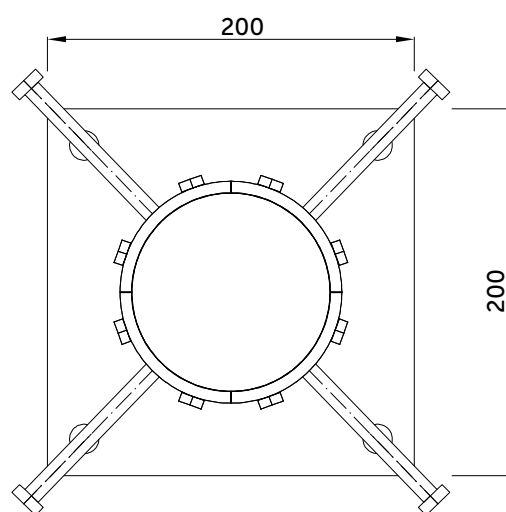
UNIVERSAL CONECTOR SINUS THRUST (TM)



SECTION



TOP VIEW





SINUS THRUST™

TECHNICAL DATA SHEET

INCLUDED:

- Steel grade S355 used with steel components.
- Movement - securig ABS dowel pockets.
- Densely provided steel dowels minimum 7 dowels per unit.
- One standard unit lenght of 2.4 meters.
- Site - friendly joint leveling system.

OPTIONAL:

- ANSI steel grades S304 & S316.
- Interstitial expansion material (5 or 10mm foam).
- Customizable count of steel dowels per unit, up to 9 per unit.
- Site - friendly joint leveling system.
- Height adjustment system to fit larger slab thickness range.

ADAPTATIVE HEIGHT JOINT SYSTEMS

UNMATCHED FLEXIBILITY & EFFICIENCY
USE FOR SEVERAL SLAB DESIGNS

SITE-PREFERRED AND TRUSTED JOINT LEVELING SYSTEMS

FREEZER INSULATION-FRIENDLY
RADON BARRIER-FRIENDLY INSTALL

CONARMOR CONNECTORS & ACCESSORIES REPAIR JOINTS

WE HAVE IT ALL
YOU BUILD IT ALL



HOW TO ORDER ?
PLEASE CONTACT CONARMOR

✉ sales@conarmorsteel.com
☎ +17044806677
📍 Conarmor LLC
PO Box 500
Mt Mourne, NC 28123

ASK ABOUT OUR SERVICES !

ASSISTANCE TO PRODUCT SELECTION
ONSITE INSTALL TRAINING SERVICES
PEER-REVIEWED LOAD TRANSFER
CALCULATIONS

CONARMOR SOLUTIONS FOR CUSTOMIZED & SPECIAL ORDERS

STAINLESS / GALVANIZED ARMOR JOINTS
BUILT TO SUIT YOUR APPLICATION
COMPOSITE POLYMER JOINT SYSTEMS